



Volume 23
Number 2
February 2012

Refocus That Please – By Ralph Reiley

The Atlanta Stereographic Association was formed in 1990 to promote, preserve, and collect all forms of stereo photography, both past and present.

Meetings are held the 2nd Friday of each month, and start at 7:30 p.m., at the 1st Christian Church of Decatur, 601, W. Ponce de Leon, Decatur Georgia.

President:
Ken Kistner
sealpup@mindspring.com

Vice President:
Ralph L. Reiley
reileys@att.net

Treasurer/Membership:
Julia Moor

Projectionist:
Larry Moor

Competition Director:
Steve Panayioto
Webmaster:
Steve & Suzanne Hughes
Newsletter Editor:
Ralph L. Reiley
reileys@att.net
770-493-1375

Membership Information:
Information can be obtained by calling Ralph Reiley @ 770-493-1375, reileys@att.net

Membership Dues for 2012:
\$30.00 for an individual,
\$30.00 for couples/family
\$30.00 for non-local
Free for Off World
(Proof Required)

Dues to be paid Julia Moor at meetings, or mail her a check at 3169 Bolero Way, Atlanta, Georgia, 30341

Website:
Our website is Georgia3d.com; it contains details about the ASA and general 3-D information

There were 10 people at the January meeting. Ken officially took command as President. While there was a small crowd, it was a very enjoyable meeting. I did not care for View Master when I was a kid, and I am finding a new appreciation for it now. We also had a club member card competition, results were:

1st Bill Moll Winter Playhouse
2nd Larry Moor Makin' Pasta
3rd Ken Kistner Blue Velvet
HM Ralph Reiley Monuments Near & Far

February Program – February 10, 2012

The February program will be the highly anticipated, and last PSA Traveling Slide Show, so don't miss it, as it is the end of an era. We will also have a club stereo slide competition, so everyone is encouraged to bring up to four stereo slides to enter.

It is also time to pay your DUES, which are \$30.00, see details in column at left, under Membership Information for 2012.

The meeting is the 2nd Friday of this month, Feb. 10, 7:30 p.m. at the 1st Christian Church of Decatur, located at 601 W. Ponce de Leon, Decatur, Ga. Road, across the street from the Decatur Post Office, see our website at Georgia3D.org, for a map to the church. If you have any questions call Ralph Reiley @ 770-493-1375, reileys@att.net.

We meet for supper at 5:30. Since the move to Decatur, the Club has been in search for a suitable place. It seems that Pyng Ho Restaurant is the place. It is located at 1357 Clairmont Road, right next to Athens Pizza. Go to: <http://www.pyngho.com> to check out the menu.

Note: Due to weather conditions, meetings have been canceled due to ice or snow. A new ASA policy is thus: If a scheduled meeting is canceled due to ice or snow, the following Friday will be the make up date.

2011-2012 ASA Schedule*

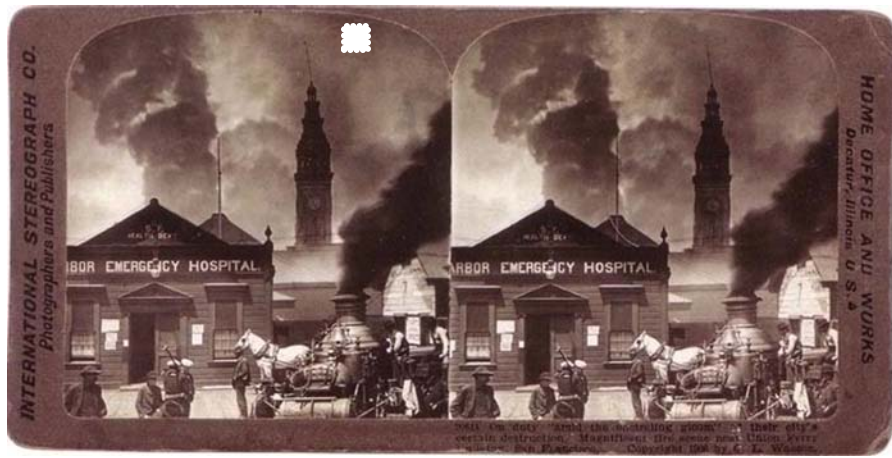
February 10, 2012	PSA Traveling Show, Slide Competition
March 9, 2012	PSA Sequence Show, Digital Competition
April 13, 2012	Ken & Steve's 3-D Video Extravaganza
May 11, 2012	ISCC Judging, TBA

*Schedule subject to change



February Mystery Photos:

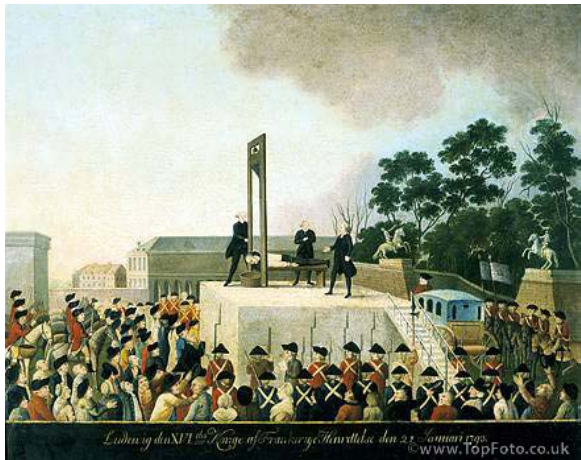
Identify the two photos at right, and win a fabulous prize. The prize will be one of the following three items: \$987,654,321.76 in cash, a new Lotus Elise, or a firm handshake and a hearty “Well Done!” from the editor.



A photo taken during the fires, following the San Francisco earthquake of 1906. Identify the manufacturer of the fire pumping engine and win the prize.



A photo taken in 1916, during the invasion of German East Africa by a Belgian Lieutenant who, contrary to official orders, made a photo record of his time in the Belgian Congo Army, called the Force Publique, during World War 1. Identify the artillery piece that soldier is standing next too, and win the prize.



DON'T LET THIS HAPPEN TO YOU!
What did King Louis do? He did not pay his dues! Don't loose your head, pay your dues, **or else!**



OAKLAND PROJECT:

At left is a photo taken by James Carroll in Oakland Cemetery, on a sunny, but cold day. The **Oakland Project** is open to all club members. An article is planned for Stereo World magazine, and if there are enough photos from club members, a slide show is to be produced for a future club meeting, the NSA and/or PSA conventions. Talk to me and James for details.



Technical Page by Charles A. Piper

Installment #28

Reprinted by permission of the Stereo Club of Southern California

THE TECHNICAL PAGE

CHARLES PIPER, EDITOR

INSTALLMENT #28

THE CARE AND FEEDING OF YOUR STEREO REALIST

If you are the type photographer who dusts off his cameras for summer vacation, and can't remember what film is in his camera from last summer, this month's column is for you. We shall talk about normal maintenance, checks you can make, and precautions in the use of your Realist.

NORMAL MAINTENANCE

Normal maintenance consists mainly of cleaning. Dust out the inside of the camera with a blower brush, or with a small artist's paint brush. Wipe the outside of the camera with a damp cloth (wrung out very dry) to remove water soluble surface dirt. The most important step in cleaning is the lenses and other optical surfaces, and no step is more fraught with danger. Don't ever wipe any optical surface with your pocket handkerchief. If it has been in your pocket, and you are outdoors, it is probably already full of grit. Usually all you need to do to the lenses is dust them. Dust both outside and inside, with the shutter open on "T". A lens that is really dirty, or has finger marks or salt spray on it, must be cleaned. The safest thing to use is a freshly opened cotton tipped applicator slightly moistened in water. Roll the applicator so that grit picked up will be rolled away from the glass, and work from the outside toward the center of the lens. Use a second clean applicator to finish the job. If the dirt won't come off with water, use rubbing alcohol or lighter fluid. Be careful, coated optical surfaces scratch easily. Lacking cotton applicators, you can use a small piece of paper hand towel wrapped on a toothpick, or of course lens tissue.

CHECKS YOU CAN MAKE YOURSELF

Verify that the rangefinder is "ON" at infinity. Very small errors, (i.e. coincidence at 50ft instead of at infinity), can be ignored. If you have to use your camera and the rangefinder is off, trust the focus wheel. Most important is that the rangefinder does not show backlash. Make this check with the back on, and with the rewind button at "A". A camera with backlash showing on the rangefinder needs an overhaul, and is likely to produce out of focus pictures. Check for free operation of the wind knob. With the rewind button on "R", it should be possible to turn the wind knob in either direction with the tip of one finger. If you feel any grittiness or "toothiness", the transport needs overhauling. Similarly check for free operation of the rewind knob. If you have an old outdated roll of film, you can check the operation of the transport and counter. When the film is transported, it should stop with a clean, definite click. A dull thud means the parts are dirty. When rewinding, stop as soon as the wind knob stops turning so you will not roll the tongue in and spoil your test film for reuse. The back latch should require some force to close, and the back should be free of play. If any of your pictures ever have a pink vertical streak on the right side of the right chip, the back closure is leaking light. In most cases a gasket is required to stop the leak. Listen to the shutter, especially at 1 sec. If it hesitates, your shutter needs an overhaul. Rotate the aperture rings. They should be free of grittiness, and should be neither too loose nor too tight.

PRECAUTIONS

Don't snap the lens cover shut, let it down gently and it will last longer. If your Realist is a 3.5, avoid vignetting by avoiding f/16 and f/22, and using f/11 sparingly. The 2.8 Realists don't vignette. Always wind your shutter with a definite, single stroke. If the Realist shutter is wound about 2/3 over and returned before reaching the stop point, the shutter will not be set, but more importantly, the blades will open as the lever returns and expose the film. This happens on all models, and is an idiosyncrasy of the design. While shooting rapidly be very careful that you don't accidentally move the focusing wheel. Finally, make sure your fingers, and the flap of your everready case are not in front of the lens. It is easy to forget if you haven't used your camera since last summer. Before you go out on your safari, go back and read Installment #1 of this series